

# Armenian Needlelace



*Poetry in Thread*



*Opposite, left: JHC 29816*

The ancient spiral-arms motif presents a powerful visual metaphor for the infinite. In Armenian culture, it is an *arevakhach* (lit., “sun cross”), a sacred symbol of eternity.

*Above: JHC 38847*

Made by Satenig Pedridis Tufenkian (1890–1959), this colorful set of antimacassars was donated to LMLT by her granddaughter, Diane O’Connell-Artinian.

*Opposite, right: JCL 23621*

A highlight of the LMLT collection, this intricately worked, needlelace-trimmed scarf is a stellar example of needlework from Aintab, a historic center of Armenian art and culture.



*As strong as it is delicate, Armenian needlelace is among humanity's oldest and most intricate forms of needlework, evoking mountains and rainbows of home.*

Armenian needlelace's distinctive interlacing patterns, thought to trap or confuse evil spirits and intentions, also appear on ancient Armenian architecture and stone carvings, depicting Earth-honoring elements of culture and place.

Through this exhibition featuring exemplary works in Lacis Museum's collection, we can imagine the makers' stories as we celebrate their immense skill and handiwork, their exuberant creativity, and their exceptional persistence.

### *About the LMLT Collection*

Our original founder, Kaethe Kliot, grew up in the ways of needle and thread.

Later, as a great maker and appreciator of diverse world textile arts, she sensed that Armenian needlelace was something special; as a result, the LMLT permanent collection is home to several hundred rare and fabulous Armenian needlelace pieces.

We are humbled and grateful to continue to receive and share donations from the public of Armenian needlelace to this day.

*This exhibition is viewable by appointment.*

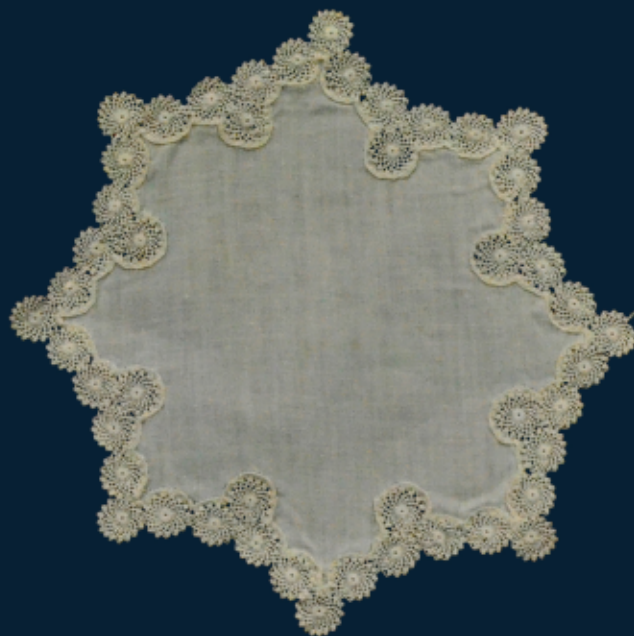
*Tours with curator Elise Youssoufian are available*

*Mondays, Fridays, and select Saturdays at 1:00 PM or 3:00 PM.*

*Please contact us to book your tour at least 24 hours in advance.*

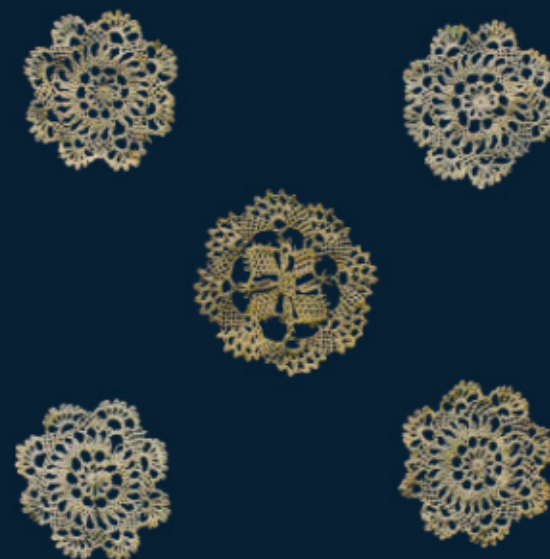


Lacis Museum of Lace & Textiles  
2982 Adeline St. Berkeley, CA  
[www.lacismuseum.org](http://www.lacismuseum.org)



*Above: JHC 29784*

Fabric doily edged in tiny needlelace medallions



*Opposite, right: JUC 29866, JUC 24442*

Individual needlelace medallions

Opening August 9, 2024