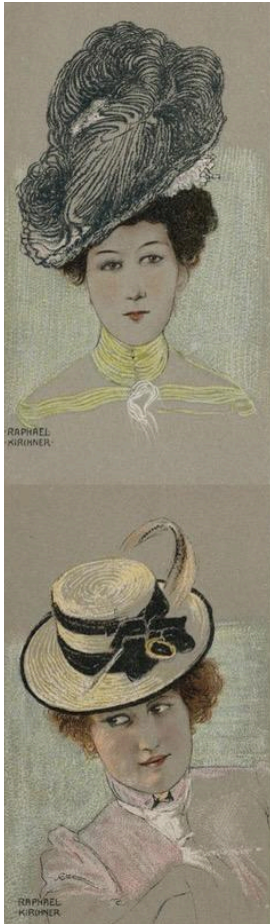


A MILLINERY CLASS

1900s STRAW HAT BLOCKING CLASS

Saturday, October 10, 2024 10:15AM - 5:15PM with Lynn McMasters

Fee: **\$45** (plus **\$15** kit fee, payable to instructor)



By the end of this class, you will have created your own personal plaited straw hat. Lynn McMasters will present a lecture on how to shape a straw hat. Students will then plan and sketch their design, then utilize heavy cardboard to shape their own hat blocks. Once dried, students will have the opportunity to explore decorating their hat with fabric, ribbons, flowers, feathers, etc. as well as consider lining for under the brim and Petersham sweatbands.

KIT INCLUDES: Blank straw hat (black, bright red, cranberry, or natural option), pattern, cardboard, tape, sizing for the hat, pins, heavy thread to match straw colors, gloves, sizing brushes, millinery wire. If you prefer to use another straw hat please reach out to Lynn McMasters directly for consultation as not all straw hat plaits are suitable for blocking.

SUPPLIES TO BRING: Scissors for cutting thick cardboard, craft/fabric scissors, hand sewing kit that includes millinery/straw needles, Beacon's fabric tac glue, heavy plastic wrap or aluminum foil, 1-2 plastic container with lid such as yogurt cups for microwaving gelatin, 2 yards of 2" elastic, apron, optional 1/2 fabric to cover the under-brim, optional decorations. All materials asides from fabric glue will be available for purchase at Lacis Museum.

INSTRUCTOR: Lynn McMasters learned to sew in her youth and began her adventures in millinery in her late 20s. She blames historical reenactment for the passion for making hats. The creator of www.outofaportrait.com, Lynn sells her exclusive line of over 60 patterns from eight costume eras.

You can register by mail, by email (info@lacismuseum.org), by phone, or in the museum shop.



LACIS MUSEUM OF LACE & TEXTILES

2982 Adeline St. Berkeley, CA 94703 • (510) 843-7290

----- Please
enroll me in **1900 STRAW HAT** with **LYNN McMASTERS** on **OCT. 24, 2024** Fee: **\$45**
NAME _____ EMAIL _____ PHONE _____
ADDRESS _____

Payment in full attached by: CHECK CREDIT CARD _____

Note: Class fee is not refundable or exchangeable unless class is canceled. EXP _____ CVC _____

SIGNATURE _____

Classes are held on the second floor, above the Museum Shop at 2980 Adeline St. in a comfortable, well-lit, air-conditioned space, accessible by elevator.